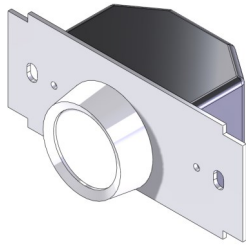




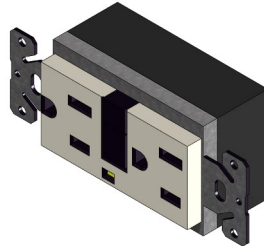
Car Operating Panels



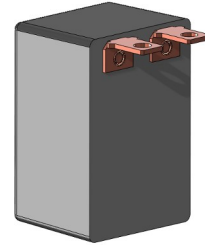
Miscellaneous Devices



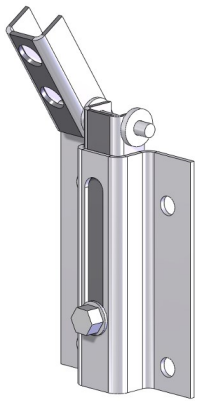
Dimmer Switch
Part # 59300006



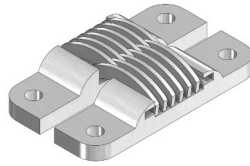
110V GFI Receptacle
Part # 59350034



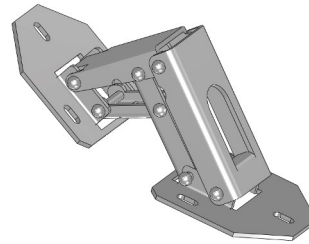
24-120VAC/DC Flasher
Part # 59990129



Slide Hinge
Right Part # 065028
Left Part # 065027



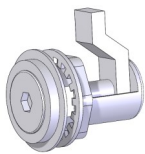
SOSS Hinge
Application: Telephone, Service
& Fire Compartments.
Part # 95204791



Snap Hinge
Part # 53401060



Emergency Stop Toggle Switch Cap
Part # 59300172



Compression Latch
Part # 60000213

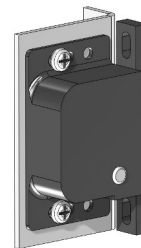
Mounts on rear of
Cover



Concealed Fastener
Part # 60000001



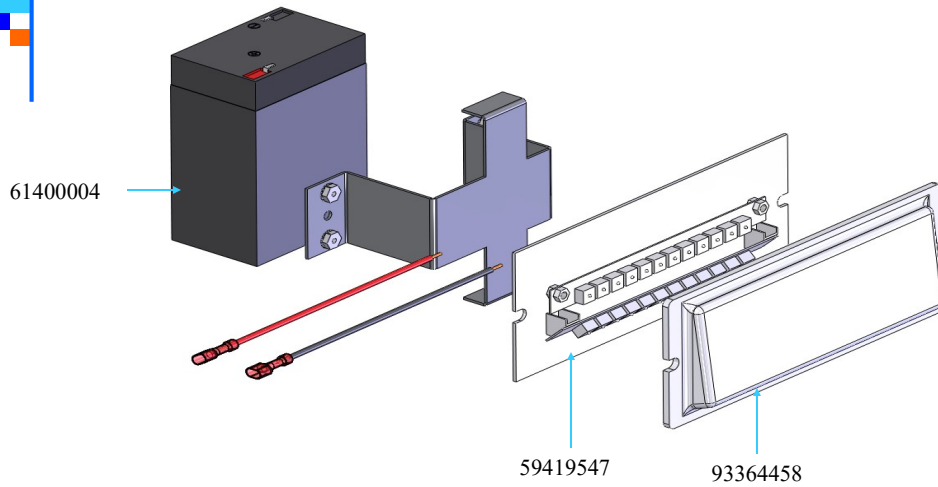
Mounts in Box



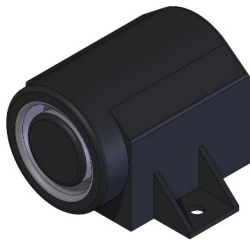
Phone Latch Assembly
Part # 050034



LED Emergency Lights



White Angled (4) LED Emergency Light Assembly
 Includes Battery, Battery Bracket, PCB, Lens and (2) 36" Long Wires
 Part # 030017
 Part # 075531 (Without Lens)



Buzzer/ Floor Passing
 24/130 VAC/DC
 Part # 63507064



Button Head Screw
 #10-24 x 1

#4 Stainless Steel	53051332
#8 Stainless Steel	050032
#4 Muntz	050094
#8 Muntz	050077



Tamper Proof Screw
 #10-24 x 1

#4 Stainless Steel	53051325
#8 Stainless Steel	050074
#4 Muntz	050095
#8 Muntz	050076

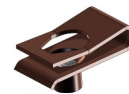


Phone Handle

#4 Stainless Steel	056017-001
#8 Stainless Steel	056017-002
#4 Muntz	056017-003
#8 Muntz	056017-004
California White	056017-005



Terminal Strip
 BEAU-76, 20 Conductor
 Part # 59400001



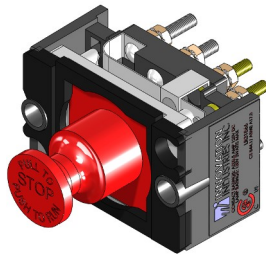
Clip Nut #10-24
 Part # 53090002



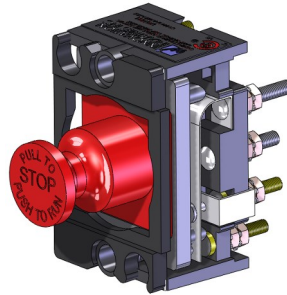
Car Operating Panels



TYPE 1 PUSH / PULL STOP

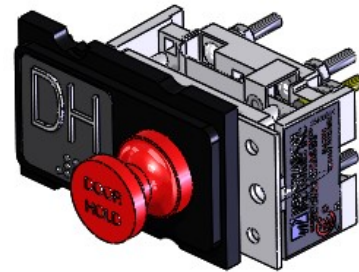


Horizontal
Emergency Stop, Push/ Pull
2 N/O 2 N/C
Part # 015001



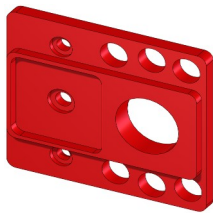
Vertical
Emergency Stop, Push/ Pull
2 N/O 2 N/C
Part # 015178

TYPE 1 PUSH / PULL DOOR HOLD

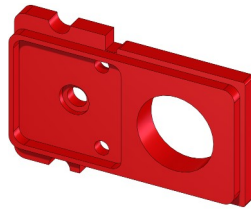


Horizontal
Door Hold, Push/ Pull
2 N/O 2 N/C
Part # 015002

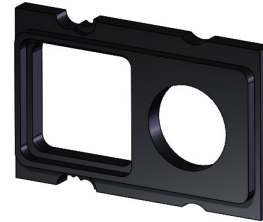
Push/Pull Decorator Halo



025099
Vertical



025540
Horizontal



025614

Stop Toggle Halo

Flush		Projecting	
Square	Round	Square	Round
025032-073	025028-073	025031-073	025027-073
			

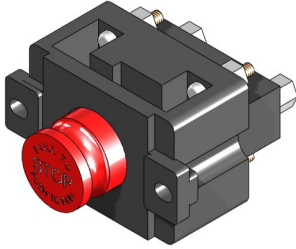


Car Operating Panels

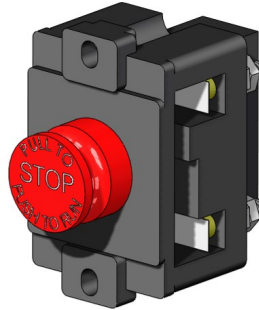


TYPE 2 PUSH / PULL STOP

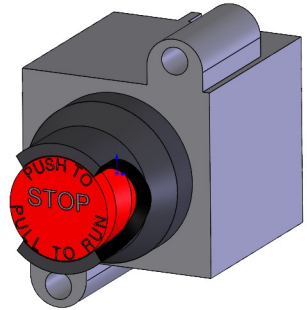
PUSH TO STOP



Horizontal
Emergency Stop, Push/ Pull
2 N/C 1 N/O



Vertical
Emergency Stop, Push/ Pull
2 N/C 1 N/O



Vertical
Emergency Stop,
"Push to Stop"
2 N/C 1 N/O
Part # 59300056
No Halo

	2 N/C 1 N/O Horizontal	2 N/C 1 N/O Vertical
Conventional	59300003	59300004
Tamper - Resistant	59300019	59300020

Halo (Red)



025097
Round



025098
Square



Miscellaneous Devices

Switchcraft #112B
Phone Jacks shown are vertical mount.
Halo is rotated for Horizontal Mount



Phone Jack Assembly
Round, Projecting
Part # 015053



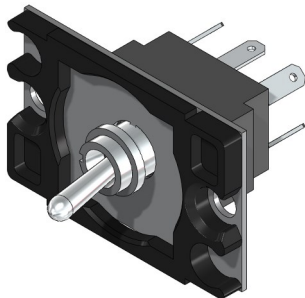
Phone Jack Assembly
Round, Flush
Part # 015053 - 002



Phone Jack Assembly
Square, Projecting
Part # 015053 - 006

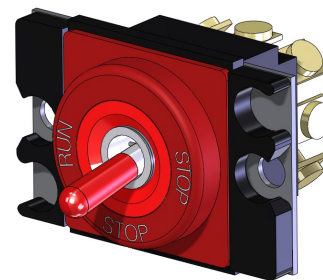


Phone Jack Assembly
Square, Flush
Part # 015053 - 005



Toggle Assembly less Halo *See Page 6 for Halos*

(Main.) ON - (Main.) ON	Vertical	DPDT	015052
(Main.) ON - (Main.) OFF - (Main.) ON	Vertical	DPTT	015154
(Main.) ON - (Main.) ON	Horizontal	DPDT	015152
(Main.) OFF - (Mom.) ON	Horizontal	DPST	015017
(Mom.) OFF - (Main.) ON	Horizontal	DPST	015740
(Main.) ON - (Main.) OFF - (Main.) ON	Horizontal	DPTT	015054
(Main.) ON - (Main.) ON - (Main.) ON	Horizontal	SPTT	015179



“STOP” Toggle Switch Assembly with Halo
(Maintained) RUN - (Maintained) STOP - TPDT

Vertical	015177
Horizontal	015014
Vertical (Fire Stop)	015180



Toggle Halo Selection Chart



BLACK				
	Round		Square	
	Projecting	Flush*	Projecting*	Flush*
Printed	025025 -XXX	025026 -XXX	025029 - XXX	025030 - XXX
Blank	93332110	93332120	93332210	93332220

RED				
	Round		Square	
	Projecting	Flush*	Projecting*	Flush*
Printed	025027- 073	025028 - 073	025031 - 073	025032 - 073
Blank	93332112	93332122	93332212	93332222



001 ZO OLL O	002 30° UP OFF 30° DOWN ACCESS ZO OLL O	003 ZO OLL LIGHT O	004 ZO OLL ACCESS O	005 OFF WOL IGH FAN ZO OLL O	006 ZO OLL FAN O	007 ZO OLL PHOTOEYE O
008 OFF FAN-LT LIGHT ZO OLL O	009 ZO OLL IND SVC O	010 ZO OLL ATTENDANT O	011 ZO OLL M. G. O	012 ZO OLL DOOR HOLD O	013 ZO OLL R-PHOTOEYE O	014 ZO OLL F-PHOTOEYE O
015 ZCR S INSPECT ZO OLL O	016 30° OFF 30° ON ZO OLL O	020 ZO OLL EMERG POWER O	021 ZO OLL SECURITY O	022 ZO OLL FREIGHT SVC O	023 ZO OLL CAR TO LOBBY O	024 ZO OLL CAR LIGHT O
025 ZO OLL WORK LIGHT O	026 TOP ZO OLL PHOTOEYE O	027 BOTTOM ZO OLL PHOTOEYE O	028 ZO OLL CONTROLLER O	029 ZO OLL PHOTOCELL O	030 ZO OLL OUT OF SVC O	031 ZO OLL PARKING O
037 ZO OLL IN SERVICE O	038 ZO OLL INSPECTION O	073 RUN STOP STOP ZO OLL O	093 ZO OLL EMERG LT TEST O	098 ZO OLL ACCESS ENABLE O		

*Toggle insert included on round projecting only. Must be ordered separately for all others.

Black Projecting 93331110

Black Flush 93331120

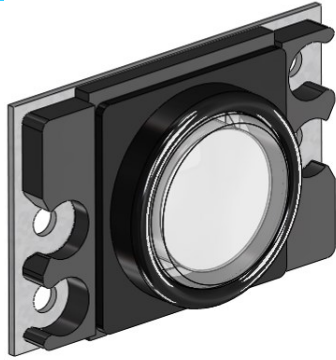
Red Projecting 93331112

Red Flush 93331122

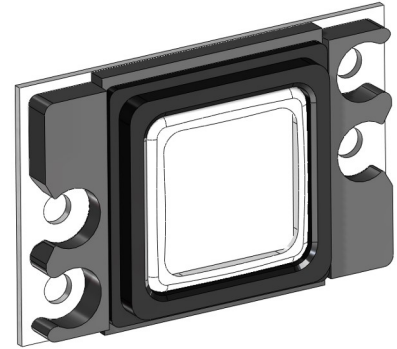


Plug Kits

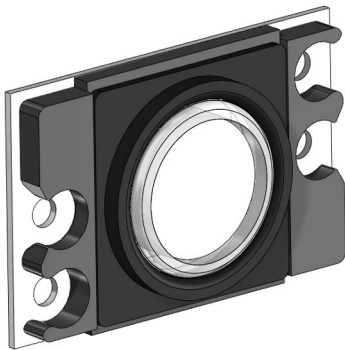
Horizontal Mount Assembly is shown. Kit is Rotated for Vertical Mount.



1.375" Dia Round Projecting
Part # 025206



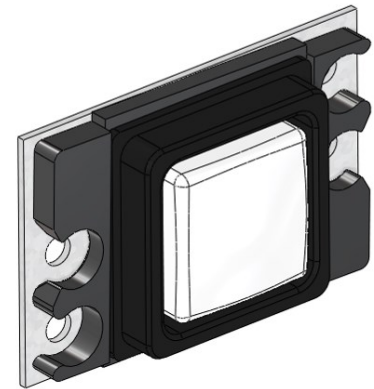
1.375" Square Flush
Part # 025207



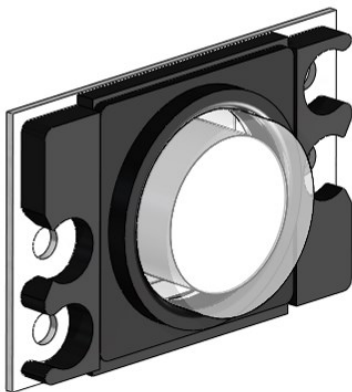
1.375" Dia Round Flush
Part # 025205



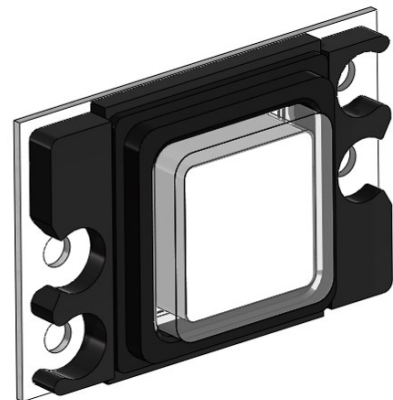
Service Cabinet Hole Plug (Black)
Part # 93390020



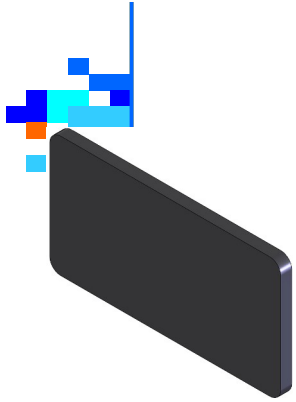
1.375" Square Projecting
Part # 025208



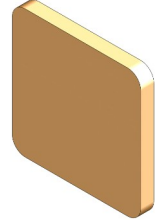
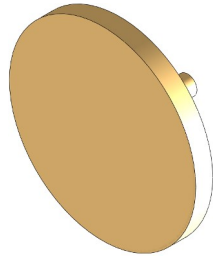
1.375" Dia, Round California Plug Kits
Part # 025311



1.375" Square California Plug Kits
Part # 025312



Miscellaneous Blanks



Decorator Blank, Part# 050153
Braille Rail Part #: 005013, 005074

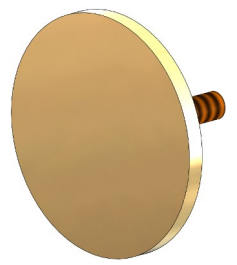
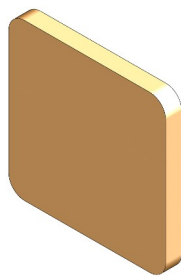
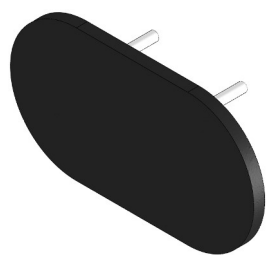
11 GA. Stainless Steel Flat Black	-001
11 GA. Stainless, #4 Brushed	-002
11 GA Stainless, #8 Mirrored	-003
0.125 Thick 60/40 Muntz, #4 Brushed	-004
0.125 Thick 60/40 Muntz, #8 Mirrored	-005

Round Blank for 1.375" Dia Hole, Part# 050103
*Braille Rail Part #: *005074, **005075*

11 GA. Stainless Steel Flat Black	-001
11 GA. Stainless, #4 Brushed	-002
11 GA Stainless, #8 Mirrored	-003
0.125 Thick 60/40 Muntz, #4 Brushed	-004
0.125 Thick 60/40 Muntz, #8 Mirrored	-005

Square Blank for 1.250" Braille, Part# 050064

11 GA. Stainless Steel Flat Black	-001
11 GA. Stainless, #4 Brushed	-002
11 GA Stainless, #8 Mirrored	-003
0.125 Thick 60/40 Muntz, #4 Brushed	-004
0.125 Thick 60/40 Muntz, #8 Mirrored	-005



Oval Braille Blank, Oval Hole, Part# 050172

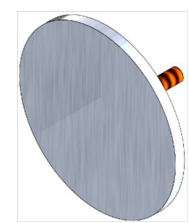
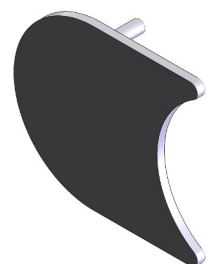
11 GA. Stainless Steel Flat Black	-001
11 GA. Stainless, #4 Brushed	-002
11 GA Stainless, #8 Mirrored	-003
0.125 Thick 60/40 Muntz, #4 Brushed	-004
0.125 Thick 60/40 Muntz, #8 Mirrored	-005

Square Blank for 1.375" Square Hole, Part# 050482
*Braille Rail Part #: *005074, **005075*

11 GA. Stainless Steel Flat Black	-001
11 GA. Stainless, #4 Brushed	-002
11 GA Stainless, #8 Mirrored	-003
0.125 Thick 60/40 Muntz, #4 Brushed	-004
0.125 Thick 60/40 Muntz, #8 Mirrored	-005

Round Blank for 0.875" Dia Hole Part# 050156
*Braille Rail Part #: *005074, **005075*

16 GA. Stainless Steel Flat Black	-001
16 GA. Stainless, #4 Brushed	-002
16 GA Stainless, #8 Mirrored	-003
0.063" Thick 60/40 Muntz, #4 Brushed	-004
0.063" Thick 60/40 Muntz, #8 Mirrored	-005



Oval Surround Braille Blank, Part# 050502
16 GA Stainless, Painted Black

Round Bruiser Blank for 1.300" Dia, Part# 050167
14 GA Stainless, No 4 Pregrain
*Braille Rail Part #: *005074, **005075*

***005074 to be used with Microtouch Button bases**
*** 005075 to be used with S-Button bases**



Key Tags



Blank Front with Below Markings on Back: Part # 025576 - XXX

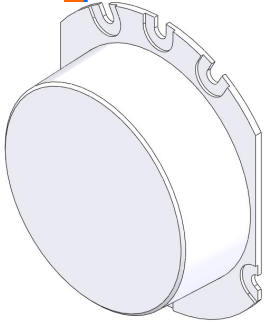
“Property of U.S. Government” Marked on Front & Below Markings on Back: Part # 025575 - XXX

 003	 004	 006	 007	 008	 009	 010
 011	 012	 015	 018	 020	 021	 022
 023	 028	 030	 031	 032	 033	 037
 041	 047	 048	 051	 055	 056	 059
 068	 073	 077	 097	 098	 100	 101
 102	 103	 104	 105	 106	 107	 108
 109	 110	 130	 131	 150	 151	 152
 153	 154	 155	 “Blank” Front View	 Front View	 Back View	

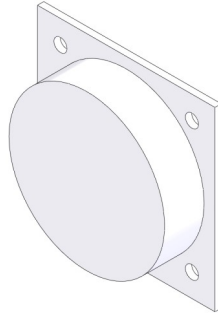


This Page is intentionally left blank.

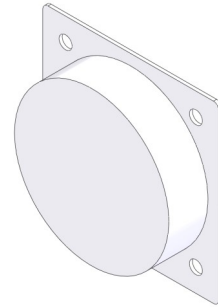
Lantern Lens



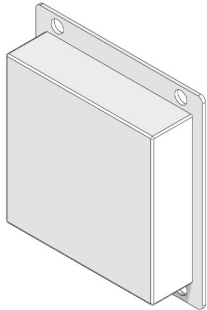
2.50" Dia,
Projecting 0.500"
Part # 93340118



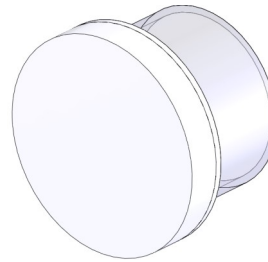
2.875" Dia,
Projecting 0.500"
Part # 93340018



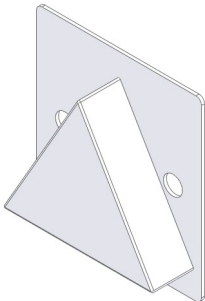
3.00" Dia,
Projecting 0.625"
Part # 93340007



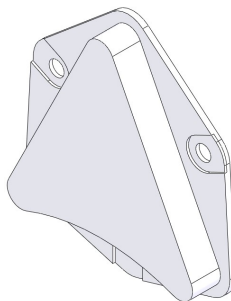
3.00" Square,
Projecting 0.6875"
Part # 93340008



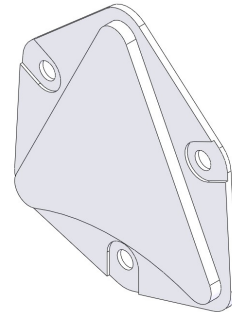
4.00" Dia, Front Serviceable
Projecting 0.625"
Part # 93300009



3.00" Equilateral,
Projecting 0.625"
Part # 93340006



2.50" Arrow,
Projecting 0.250"
Part # 93340318



2.50" Arrow, Flush
Part # 93340328

0.375" Dia Convex Tamper Proof



Jewel Color	Part Number
Red	93390007
Green	93393012
White	93390006
Clear	93393011

Ring retainer, E - Type
For use with 0.375" Tamper Proof Jewel
Part # 53090003

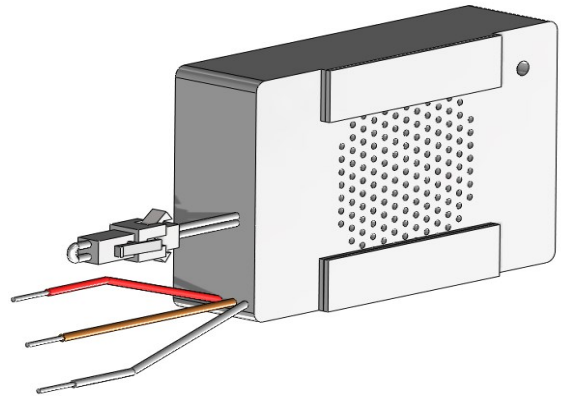
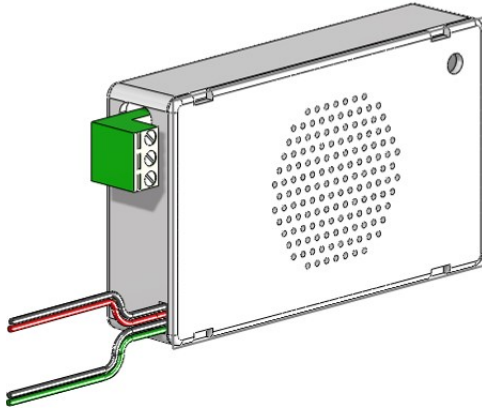




Chimes

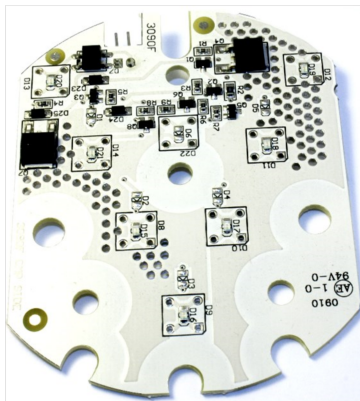
Part # 59419124 - 24VDC Lantern
CE Interface, serial to discrete with Integral Chime

Part # 63507062 - Multivolt Chime 24/ 120 VAC/ DC



Lantern Circuit Boards

Part # 5941S6CCV5X
PCB, LED Lantern, 24 - 120 VAC/ DC

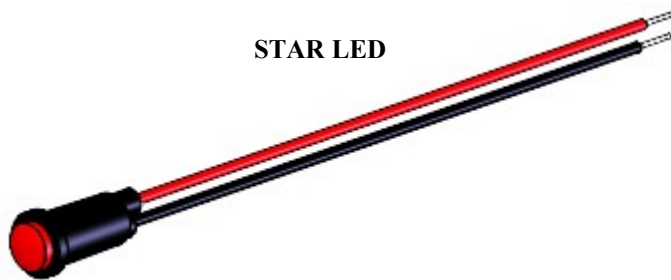


X	Color
R	Red
G	Green
B	Blue
W	White



Cable included with each Lantern Board.

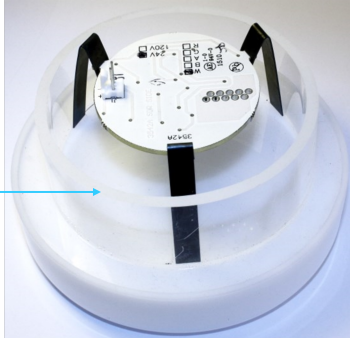
STAR LED



Color/ Voltage	Part Number
Red/ 24 V	62409133
Red/ 120 V	62409129
Green/ 24 V	62409134
Green/ 120 V	62409130



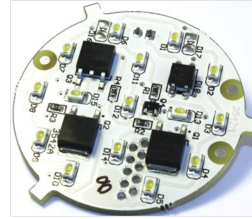
Lantern Circuit Boards



Fits tubes with inner diameters 3" to 2.25"



Clip
Part # 53408261



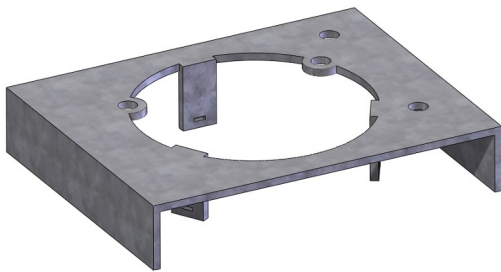
X	Color
R	Red
G	Green
W	White
B	Blue

Part # 59413542-1X
PCB, LED Lantern 120VAC/ DC

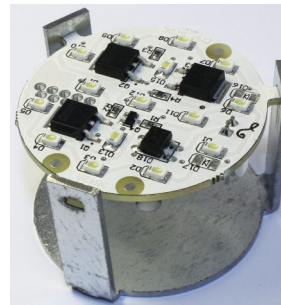
Part # 59413542-4X
PCB, LED Lantern 24VAC/ DC

(Other Voltages Available on Request)

Retro Front Serviceable Hall Lantern converts Incandescent to LED Illumination.
LED Circuit Board Ordered Separate.



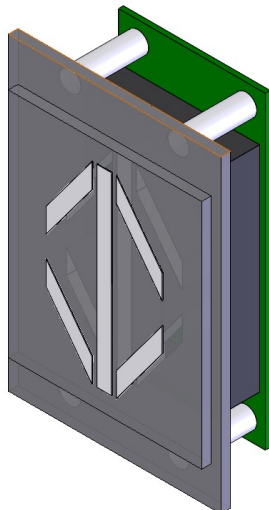
Bracket for Hall Lantern
Bracket Part # 005589
LED Circuit Board Ordered Separate.



Circuit Board - Mounting Bracket
Bracket Part # 005583

For Narrow Boxes (min 2.25" wide inside) Circuit Board & Bracket Assembly can be mounted with Velcro or sheet metal screw to back of box.
LED Circuit Board ordered separate.

Digital Lantern



SA125 - X X X X X

ORIENTATION:
"V" = VERTICAL

COLOR:
"W" = WHITE

SIGNAL VOLTAGE:
"Z" = +/-20 - 130 VAC/DC

SIGNAL (ARRIVAL or TRAVELING,
ONLY if MICRO COMM)
"X" = NON-MICRO COMM build

LENS:
"G" = GRAY

Lantern Digital Arrow
SA125-VWZXX Part # 59411336 (without lens)
Lens Part # 93360044



Hall Lantern Retrofit Kits



TERMINAL

Part #	Description
LKIT – 120 Blue	Kit, Lantern, Retro Blue, 120V
LKIT – 120 Green	Kit, Lantern, Retro Green, 120V
LKIT – 120 Red	Kit, Lantern, Retro Red, 120V
LKIT – 120 White	Kit, Lantern, Retro White, 120V
LKIT – 24 Blue	Kit, Lantern, Retro Blue, 24V
LKIT – 24 Green	Kit, Lantern, Retro Green, 24V
LKIT – 24 Red	Kit, Lantern, Retro Red, 24V
LKIT – 24 White	Kit, Lantern, Retro White, 24V

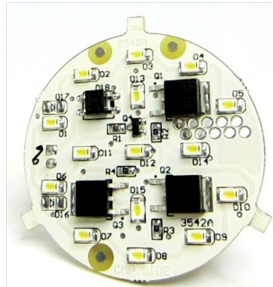
INTERMEDIATE

Part #	Description
LKIT – 120 Red/Green	Kit, Lantern, Retro Green, 120V
LKIT – 120 Red/White	Kit, Lantern, Retro Red, 120V
LKIT – 120 White/White	Kit, Lantern, Retro White, 120V
LKIT – 24 Red/Green	Kit, Lantern, Retro Green, 24V
LKIT – 24 Red/White	Kit, Lantern, Retro Red, 24V
LKIT – 24 White/White	Kit, Lantern, Retro White, 24V

Existing Lens
(Not Included)



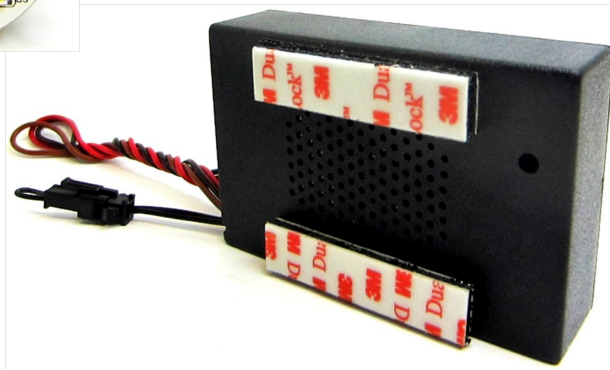
PCB Lantern Bracket
Part # 59413542 - 4X



PCB Lantern
Part # 005583



Spring Clip Bracket
Part # 53408261



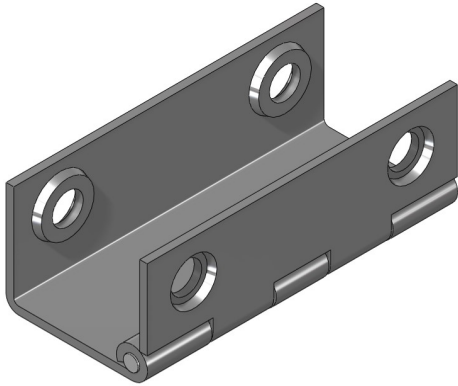
Chime
Part # 63507062

Change Front Serviceable lantern Lens from incandescent illumination to LED illumination. Parts shown are included in Retro Kit. This includes the choice of (2) brackets, 005583 bracket is for mounting to the back of the box with Velcro or a sheet metal screw. Bracket 53408261 is for mounting the PCB inside the tube of the lantern Lens. See page 13 for bracket assembly to the PCB.

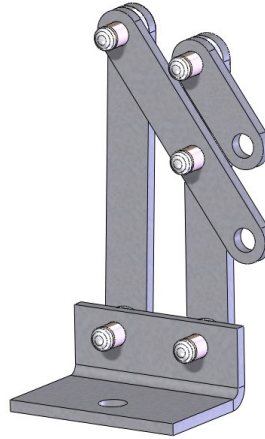


Car & Hall Lanterns

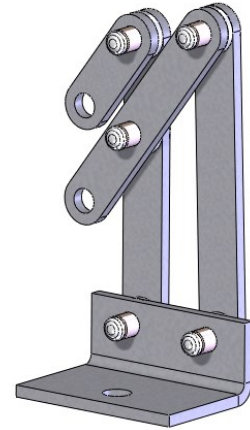
Hardware



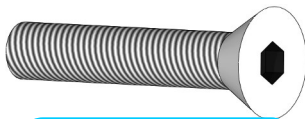
Hinge for Hinged I-Line
Part # 95400130



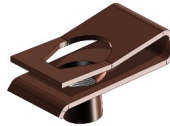
Scissor Hinge Assembly
Right Hinge
Part # 95205000



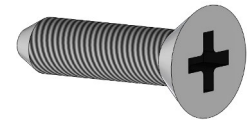
Scissor Hinge Assembly
Left Hinge
Part # 95205001



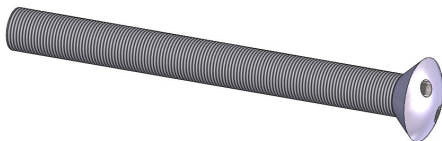
Flat Head Screw #10-24 x 1.000"	
Flat Black	53050033
Stainless Steel	53050034



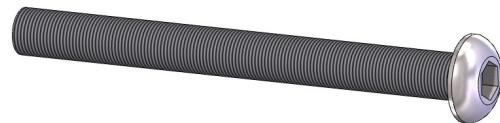
Clip Nut #10-24
Part # 53090002



Flat Head Type "F", Phillips Screw #4-40 x 3/8"	
Flat Black	53050029
Stainless Steel	53050035



Tamper Proof Screw #10-24 x 2"	
#4 Stainless Steel	53051324
#8 Stainless Steel	050078
#4 Muntz	050002
#8 Muntz	050003



Button Head Screw #10-24 x 2"	
#4 Stainless Steel	53051394
#8 Stainless Steel	050200
#4 Muntz	050201
#8 Muntz	050202



This Page is intentionally left blank.




Fire Plates



XXX	Color of Letters Unless Noted Otherwise
001	11 GA #4 Stainless Steel on Black
003	0.125 #4 Muntz on Black

FIREFIGHTERS' OPERATION



When flashing, exit elevator

To operate car Insert fire key and turn to "on"
Press desired floor button

To cancel floor selection Press "CALL CANCEL" button

To close power-operated door Press and hold "DOOR CLOSE" button


To open power-operated door Press and hold "DOOR OPEN" button

To hold car at floor With doors open, turn key to "HOLD"

To automatically send car to recall floor With doors open, turn key to "OFF"

050451 - XXX
Fire Plate, PH II, 1998
6.50" x 4.00"

FIRE OPERATION



When Flashes, exit elevator

To operate car Insert fire key and turn to "on"
Press desired button

To cancel floor selection Press "CALL CANCEL" button

To close power-operated door Press and hold "DOOR CLOSE" button

To open power-operated door Press and hold "DOOR OPEN" button

To hold car at floor With doors open, turn key to "HOLD"

To automatically send car to recall floor Turn key to "OFF"

050452 - XXX
Fire Plate, PH II, 2000, 2002
6.50" x 4.50"

FIREFIGHTERS' OPERATION

To operate car Insert fire key and turn to "FIREMAN SERVICE"
Press desired floor button

To cancel floor selection Press "CALL CANCEL" button

To close door Press and release "DOOR CLOSE" button


To open door Press and hold "DOOR OPEN" button

To hold car at floor With doors open, turn key to "HOLD"

To return car to recall floor With doors open, turn key to "NORMAL"

050456 - XXX
Fire Plate, PH II, NYC
6.50" x 4.00"

FIREFIGHTERS' OPERATION



When Flashes, exit elevator

To operate car Insert fire key and turn to "FIREMAN SERVICE"
Press desired floor button

To cancel floor selection Press "CALL CANCEL" button

To close door Press and release "DOOR CLOSE" button

To open door Press and hold "DOOR OPEN" button

To hold car at floor With doors open, turn key to "HOLD"

To return car to recall floor With doors open, turn key to "NORMAL"

050486 - XXX
Fire Plate, PH II, NYC
6.50" x 4.00"

FIREFIGHTERS' OPERATION

To operate car Insert fire key and turn to "ON"
Press desired floor button

To cancel floor selection Press "CALL CANCEL" button

To close power-operated door Press and hold "DOOR CLOSE" button

To open power-operated door Press and hold "DOOR OPEN" button

To hold car at floor With doors open, turn key to "HOLD"

To automatically send car to recall floor With doors open, turn key to "OFF"

050450 - XXX
Fire Plate, PH II, 1996
6.50" x 4.00"

FIREFIGHTERS' OPERATION

To recall elevators
Insert fire key and turn to "ON"

050453 - XXX
Phase I Plates
3.615" x 1.500"

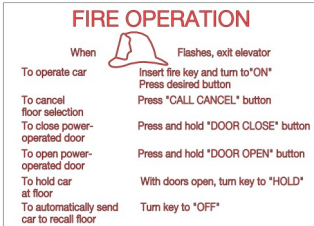
FIREFIGHTERS' OPERATION

TO RECALL ELEVATORS
INSERT FIRE KEY AND TURN TO FIREMAN SERVICE

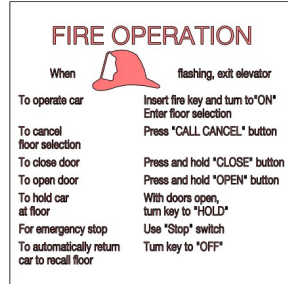
050457 - XXX
Phase I Plates, NYC
3.615" x 1.500"



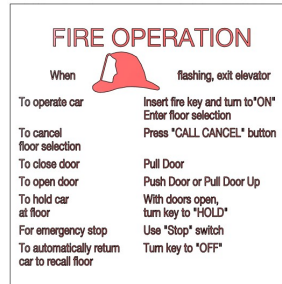
Fire Plates



39636563
Label, Ph II Inst., 2004
Red on White,
w/ adhesive
5.00" x 3.55"



39636565
Label, Ph II Inst., 2005,2007
Red on White, Inside Fire Cab.
w/ adhesive
4.00" x 4.00"



39636566
Label, Ph II Inst., Freight,
2004, 05, 07, Red on White
Inside Fire Cab w/adhesive
4.00" x 4.00"



39636564
Label, Fire Operation
2004 Code
Inside Fire Cab w/adhesive
2.500" x 0.375"

Miscellaneous Plates

XXX	Color of Letters Unless Noted Otherwise
001	11 GA #4 Stainless Steel on Black
003	0.125 #4 Muntz on Black



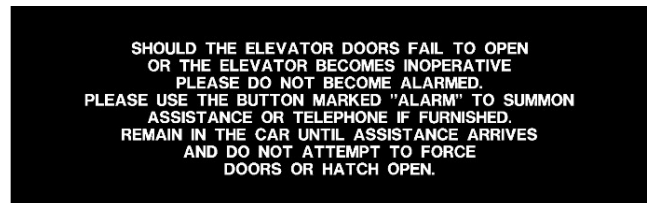
050474 - XXX
7.00" x 2.25"



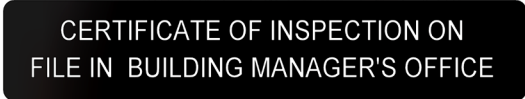
050476 - XXX
7.00" x 2.25"



050475 - XXX
7.00" x 2.25"



050473 - XXX
7.00" x 2.25"



5.875" x 1.125"
050488 - 001 11 GA #4 Stainless Steel



No Smoking

XXX	Color of Letters
001	11 GA #4 Stainless Steel on Black
003	0.125 #4 Muntz on Black



NO SMOKING
 COUNTY ORDINANCE PROHIBITS THE
 CARRYING OF LIGHTED TOBACCO
 PRODUCTS OF ANY KIND
 \$25.00 FINE

050479 - 001 8.50" x 5.00"
 050479 - 003 11 GA #4 Stainless Steel
 0.125 # 4 Muntz

NO SMOKING
 BY ORDER OF THE FIRE CHIEF
WARNING
 ELEVATORS SHALL NOT BE USED
 IN CASE OF FIRE OR ELECTRICAL
 EMERGENCY. USE DESIGNATED EXITS.
 ALL ACCIDENTS OR DAMAGE TO ELEVATORS
 TO BE REPORTED IMMEDIATELY TO THE
 DEPARTMENT OF CONSUMER AND REGULATORY
 AFFAIRS (202) 442-4400 AFTER WORKING HOURS
 CALL DISTRICT OPERATOR AT 311

050484 - XXX
 7.00" x 6.5"
 D.C. Signage

NO SMOKING
 VIOLATORS SUBJECT TO FINE
 SEC. 41.51 L. A. M. C.

050459 - XXX
 7.00" x 2.25"

NO SMOKING

050461 - XXX
 7.00" x 2.25"

NO SMOKING
 BY ORDER OF THE FIRE CHIEF

050477 - XXX
 7.00" x 2.25"

NO SMOKING
 SMOKING OR CARRYING LIGHTED TOBACCO
 PRODUCTS IN THIS ELEVATOR IS ILLEGAL AND
 SUBJECT TO A PENALTY NOT TO EXCEED \$25.00
COMMISSIONER OF LABOR AND INDUSTRY

050478 - XXX
 7.00" x 2.25"

NO SMOKING
 CAPACITY XXXX LBS.

7.00" x 2.25"

NS/Cap. xxxx	Part Number
2500 lbs	050462 - XXX
3000 lbs	050463 - XXX
3500 lbs	050464 - XXX
4000 lbs	050465 - XXX
1500 lbs	050466 - XXX
2100 lbs	050467 - XXX
4500 lbs	050468 - XXX
5000 lbs	050469 - XXX
10000 lbs	050470 - XXX
6000 lbs	050471 - XXX
8000 lbs	050472 - XXX
2000 lbs	050480 - XXX



Elevator No, Phone & Inspection Plates



ELEVATOR NO. X

3.375" x 1.125"
11 GA #4 Stainless Steel

Elevator No.	Part Number
X	
1	39736557
2	39736559
3	39736561
4	050513-001

YOU MAY SPEAK
WHEN LIGHT IS ON

BLINKING LIGHT
CALL ANSWERED

3.375" x 1.125"
39730039 - 001 11 GA#4 Stainless Steel
39730039 - 003 0.125 #4 Muntz

WHEN FLASHING
HELP IS ON THE WAY

3.375" x 1.125"
39730029 11 GA #4 Stainless Steel
39730030 0.125 #4 Muntz

CALL IS ● ● HELP IS
BEING PLACED ON THE WAY

3.375" x 1.125"
39730043 11 GA #4 Stainless Steel
39730044 0.125 #4 Muntz

ALARM
CALL IN ● ● RECEIVED
PROGRESS WHEN LIT
PUSH BUTTON

3.375" x 1.125"
39730046 11 GA #4 Stainless Steel
39730047 0.125 #4 Muntz

WHEN FLASHING
●
HELP IS ON THE WAY

3.375" x 1.125"
39730031 11 GA #4 Stainless Steel
39730032 0.125 #4 Muntz



Capacity Plates



**CAPACITY
XXXX LBS.**

3.375" x 1.125"

Muntz

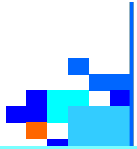
Capacity xxxx	Part Number
750 lbs	39720006
2000 lbs	39722002
2500 lbs	39722003
3000 lbs	39722004
3500 lbs	39722005
4000 lbs	39722006
950 lbs	39722021

**CAPACITY
XXXX LBS.**

3.375" x 1.125"

Stainless Steel

Capacity xxxx	Part Number
1800 lbs	39720001
2100 lbs	39720002
1200 lbs	39720003
950 lbs	39721021
750 lbs	39720004
1400 lbs	39720032
1500 lbs	39721001
2000 lbs	39721002
2500 lbs	39721003
3000 lbs	39721004
3500 lbs	39721005
4000 lbs	39721006
4500 lbs	39721007
5000 lbs	39721008
5500 lbs	39721009
6000 lbs	39721010
7500 lbs	39721013
8000 lbs	39721014
10000 lbs	39721018



Braille



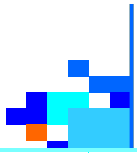
Designations	Square			Round		Oval Surround		
	White	Stainless	Muntz	White	Stainless	White	Stainless	Muntz
Call	39883000	39881400	Special Order	Special Order	39841400	Special Order	Special Order	Special Order
1	39883001	39881401	39882401	39793001	39841401	39803001	39801401	39802401
2	39883002	39881402	39882402	39793002	39841402	39803002	39801402	39802402
3	39883003	39881403	39882403	39793003	39841403	39803003	39801403	39802403
4	39883004	39881404	39882404	39793004	39841404	39803004	39801404	39802404
5	39883005	39881405	39882405	39793005	39841405	39803005	39801405	39802405
6	39883006	39881406	39882406	39793006	39841406	39803006	39801406	39802406
7	39883007	39881407	39882407	39793007	39841407	39803007	39801407	39802407
8	39883008	39881408	39882408	39793008	39841408	39803008	39801408	39802408
9	39883009	39881409	39882409	39793009	39841409	39803009	39801409	39802409
10	39883010	39881410	39882410	39793010	39841410	39803010	39801410	39802410
11	39883011	39881411	39882411	39793011	39841411	Special Order	39801411	Special Order
12	39883012	39881412	39882412	39793012	39841412	Special Order	39801412	Special Order
13	39883013	39881413	39882413	39793013	39841413	Special Order	39801413	Special Order
14	39883014	39881414	39882414	39793014	39841414	Special Order	39801414	Special Order
15	39883015	39881415	39882415	39793015	39841415	Special Order	39801415	Special Order
16	39883016	39881416	39882416	Special Order	39841416	Special Order	39801416	Special Order
17	39883017	39881417	39882417	Special Order	39841417	Special Order	39801417	Special Order
18	39883018	39881418	39882418	Special Order	39841418	Special Order	39801418	Special Order
19	39883019	39881419	39882419	Special Order	39841419	Special Order	39801419	Special Order
20	39883020	39881420	39882420	Special Order	39841420	Special Order	39801420	Special Order
21	Special Order	39881421	Special Order	Special Order	Special Order	Special Order	Special Order	Special Order
22	Special Order	39881422	Special Order	Special Order	Special Order	Special Order	Special Order	Special Order
23	Special Order	39881423	Special Order	Special Order	Special Order	Special Order	Special Order	Special Order
24	Special Order	39881424	Special Order	Special Order	Special Order	Special Order	Special Order	Special Order



Braille



Designations	Square			Round		Oval Surround		
								
	White	Stainless	Muntz	White	Stainless	White	Stainless	Muntz
25	Special Order	39881425	Special Order	Special Order	Special Order	Special Order	Special Order	Special Order
A	Special Order	39881441	Special Order	Special Order	Special Order	Special Order	Special Order	Special Order
B	39883042	39881442	39882442	39793042	39841442	Special Order	39801442	Special Order
C	Special Order	39881443	Special Order	Special Order	Special Order	Special Order	Special Order	Special Order
G	39883044	39881444	39882444	39793044	39841444	39803044	39801444	Special Order
L	39883045	39881445	Special Order	39793045	39841445	Special Order	39801445	Special Order
M	Special Order	39881446	Special Order	Special Order	39841446	Special Order	Special Order	Special Order
P	Special Order	39881447	Special Order	Special Order	Special Order	Special Order	Special Order	Special Order
R	Special Order	39881448	Special Order	Special Order	Special Order	Special Order	Special Order	Special Order
S	Special Order	39881449	Special Order	Special Order	Special Order	Special Order	Special Order	Special Order
BR	Special Order	39881450	Special Order	Special Order	Special Order	Special Order	Special Order	Special Order
DH	39883051	39881451	39882451	39793051	39841451	Special Order	39801451	Special Order
DS	Special Order	39881452	Special Order	Special Order	39841452	Special Order	Special Order	Special Order
ML	Special Order	39881453	Special Order	Special Order	Special Order	Special Order	Special Order	Special Order
SB	Special Order	39881454	Special Order	Special Order	Special Order	Special Order	Special Order	Special Order
ALARM	39883055	39881455	39882455	39793055	39841455	39803055	39801455	39802455
INT SOUND	Special Order	39881456	Special Order	Special Order	Special Order	Special Order	Special Order	Special Order
DOOR CLOSE	39883057	39881457	39882457	39793057	39841457	39803058	39801458	39802458
DOOR OPEN	39883058	39881458	39882458	39793058	39841458	39803057	39801457	39802457
*1	39883059	39881459	39882459	39793059	39841459	39803059	39801459	Special Order
*2	Special Order	39881462	Special Order	Special Order	39841462	Special Order	Special Order	Special Order
*3	Special Order	39881463	Special Order	Special Order	Special Order	Special Order	Special Order	Special Order
*B	Special Order	39881465	Special Order	Special Order	Special Order	Special Order	Special Order	Special Order
*G	39883046	39881467	39882467	39793067	39841467	39803067	39801467	Special Order
*L	39883069	39881469	39882469	39793069	39841469	39803069	39801469	Special Order



Braille



Designations	Square			Round		Oval Surround		
	White	Stainless	Muntz	White	Stainless	White	Stainless	Muntz
*LL	Special Order	39881470	Special Order	Special Order	Special Order	Special Order	Special Order	Special Order
PHONE	39883077	39881477	39882477	39793077	39841477	39803077	39801477	Special Order
LL	Special Order	39881478	Special Order	Special Order	39841478	Special Order	39801478	Special Order
LR	Special Order	39881479	Special Order	Special Order	Special Order	Special Order	Special Order	Special Order
UL	Special Order	39881480	Special Order	Special Order	Special Order	Special Order	Special Order	Special Order
UP	39883081	39881481	39882481	39793081	39841481	39803081	39801481	Special Order
DOWN	39883082	39881482	39882482	39793082	39841482	39803082	39801482	Special Order
1R	Special Order	39881483	Special Order	Special Order	39841483	Special Order	Special Order	Special Order
2R	Special Order	39881484	Special Order	Special Order	39841484	Special Order	Special Order	Special Order
3R	Special Order	39881485	Special Order	Special Order	Special Order	Special Order	Special Order	Special Order
4R	Special Order	39881486	Special Order	Special Order	Special Order	Special Order	Special Order	Special Order
GR	Special Order	39881487	Special Order	Special Order	Special Order	Special Order	Special Order	Special Order
RS	Special Order	39881488	Special Order	Special Order	Special Order	Special Order	Special Order	Special Order
P1	Special Order	39881501	39882501	Special Order	Special Order	Special Order	39801501	Special Order
P2	Special Order	39881502	39882502	Special Order	Special Order	Special Order	39801502	Special Order
P3	Special Order	39881503	Special Order	Special Order	Special Order	Special Order	39801503	Special Order
PH	Special Order	39881504	Special Order	Special Order	Special Order	Special Order	39801504	Special Order
RDO	39883056	39881506	39882506	Special Order	39841506	Special Order	39801506	Special Order
RDC	39883054	39881508	39882508	Special Order	39841508	Special Order	39801508	Special Order
RDH	Special Order	39881509	Special Order	Special Order	Special Order	Special Order	Special Order	Special Order
DR	Special Order	39881510	Special Order	Special Order	Special Order	Special Order	Special Order	Special Order
*0	Special Order	39881511	Special Order	Special Order	Special Order	Special Order	Special Order	Special Order
-1	Special Order	39881512	Special Order	Special Order	Special Order	Special Order	Special Order	Special Order
-2	Special Order	39881513	Special Order	Special Order	Special Order	Special Order	Special Order	Special Order
-3	Special Order	39881514	Special Order	Special Order	Special Order	Special Order	Special Order	Special Order
STOP(VERB)	39883515	39881515	39882515	39793515	39841515	39803509	39801509	39802515

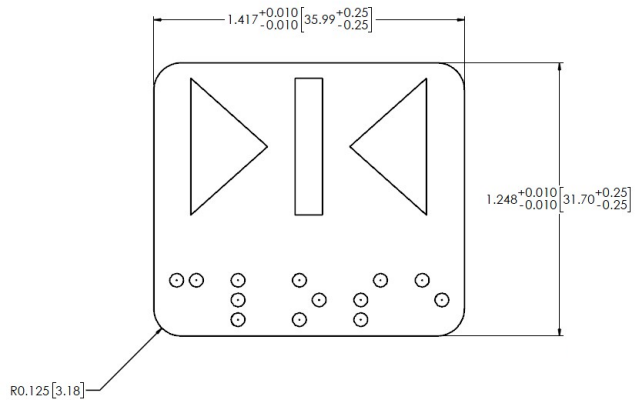
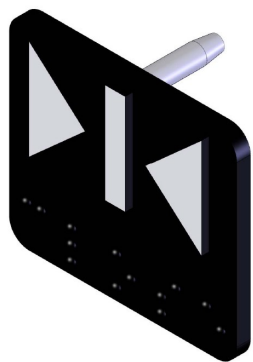


Braille California Code Compliant

Example: Part Number 39893057



Designations	Part Number	Designations	Part Number
1	39893001	*G	39893046
2	39893002	DH	39893051
3	39893003	RDC	39893054
4	39893004	ALARM	39893055
5	39893005	RDO	39893056
6	39893006	DOOR CLOSE	39893057
7	39893007	DOOR OPEN	39893058
8	39893008	*1	39893059
9	39893009	*L	39893069
10	39893010	STOP	39893076
11	39893011	PHONE	39893077
12	39893012	UP	39893081
B	39893042	DOWN	39893082
G	39893044	STOP(VERB)	39893515



White character on Black background



Braille
Phone / Help with Stud



39821522

Used in Brushed Stainless Panels



39821523

Used in Mirror Stainless Panels



39821524

Used in Brushed or Mirror Muntz Panels



39821526

Raised finish to be California White on Black



Part Number EJ4 - SSBB - X

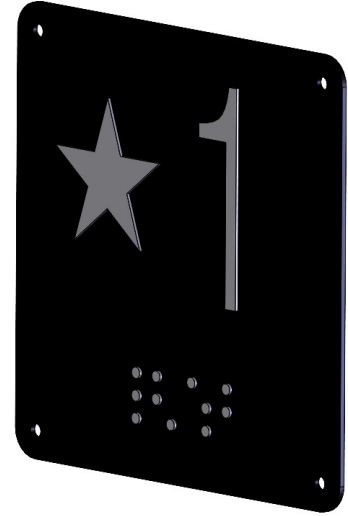
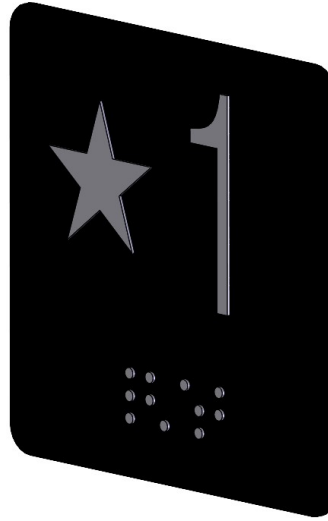
*X is the Designation
4"W x 4"H
Adhesive Back*

**Braille
Jamb Tags**



Example: Part Number EJ4 - SSBB - *1

Stainless character on Black background Designations "X"	Designations "X"
1	C
2	G
3	L
4	M
5	P
6	R
7	S
8	*1
9	*2
10	*3
11	*B
12	*G
13	*L
14	*LL
15	LL
16	UL
17	1R
18	2R
19	3R
20	4R
21	GR
22	P1
23	P2
24	P3
25	PH
A	T
B	



**Part Number EJ4 - WB - X
Part Number EJ4-1116B114W—STAR—X**
*X is the Designation
4"W x 4"H
Adhesive Back*

**Part Number EJ4 - SSBH - X
Part Number EJ4-SSBH—STAR—X**
*X is the Designation
4"W x 4"H
Adhesive Back*

White character on Black background Designations "X"
1
2
3
4
5
6
7
8
9
10
B
*1
*G
*L

White character on Black background Designations "X"
1
2
3
4
5
6
7
8
9
10
B
*1



Elevator Number



Elevator Number	Part Number
1	050496 - 00Y
2	050497 - 00Y
3	050498 - 00Y
4	050499 - 00Y
5	050500 - 00Y

Example: Part Number 050496 - 001



4.00" x 4.00"

*Y : 1 for Stainless Steel Characters on Black, adhesive back
3 for Muntz Characters on Black, adhesive back*

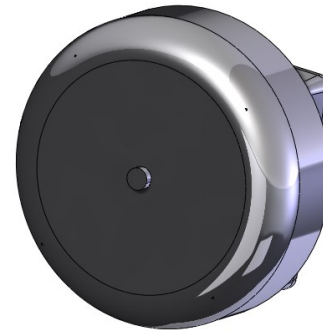
Other Designations Available Upon Request



This Page is intentionally left blank.



Accessories



63502156

6 Volt Bell

18 Gauge Wires

Dual Mounting: 4X4 Standard Handy Box

Or 3-Hole Triangular Mount

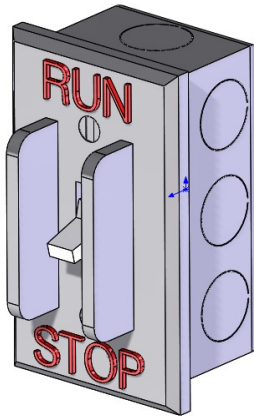
Polycarbonate Base W/UL Flammability Rating UL94-5V

Contact Arc Suppression Circuit

Files:

UL 464

CSA Certified



61100002

Pit Stop Switch (Model PS3)

Red Run/Stop Control Switch (20 AMP - 250 VAC)

Run/Stop in 1/2" Raised Letters

Cast Aluminum cover

*61100036

Pit Stop Switch (Model PS4)

Red Push to Stop / Pull to Run Switch

(1NC, 10 AMP - 600 VAC)

Steel, zinc plated, box and cover



Car Top Inspection Station W/Ground Fault & Lamp Guards

61100003—110 Volt Car Top Inspection Station

*61100013—24 VDC-48 VDC Car Top Inspection Station

*61100037—24 VDC-48 VDC Car Top Inspection Station w/ 6V Bell

*61100041—24 VDC-48 VDC Car Top Inspection Station w/ Push-Pull Stop

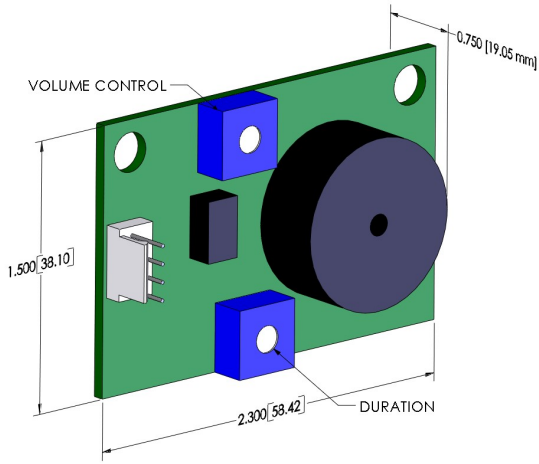
*** NOT SHOWN**



This Page is intentionally left blank.



Passing Chime & Controller Units



59411001
CE MPCB1 Passing Chime



CE MCCA-4C2CCCA Central Control Unit	
Innovation Part#:	59411041
Signal Voltage:	Positive 120 VAC
Signal Format:	Binary or One Line
Number of Inputs:	Up to 31 Inputs



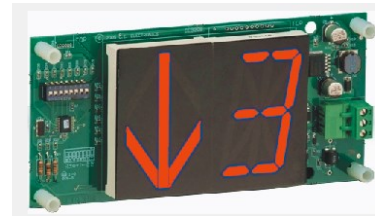
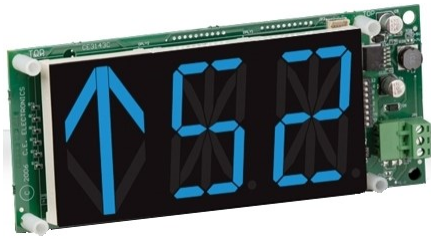
CE SMCDU-C2B Central Control Unit (With Box & Cover)	
Innovation Part#:	59411042
Signal Voltage:	Positive 120 VAC
Signal Format:	Binary or One Line
Number of Inputs:	Up to 8 Inputs



CE MCCA-4F2FFFA Central Control Unit		CE MCCA-4F2FFFE Central Control Unit (With Box & Cover)	
Innovation Part#:	59411043	Innovation Part#:	59411045
Signal Voltage:	Negative 24-48 VDC	Signal Voltage:	Negative 24-48 VDC
Signal Format:	Binary or One Line	Signal Format:	Binary or One Line
Number of Inputs:	Up to 31 Inputs	Number of Inputs:	Up to 31 Inputs

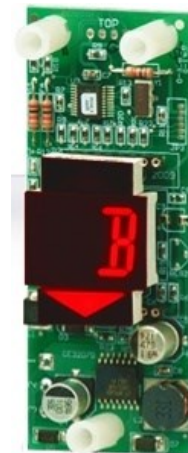
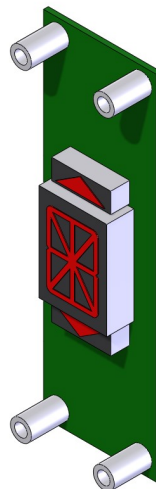


SEGMENTED DPIs



59411222	MH222-RRX Red w/ Arrow
59411223	MH222-BBX Blue w/ Arrow
59411224	MH222E-RRXW Red w/ Arrow (I-Line Mount)
59411226	MH222-GGX Green w/ Arrow
59411227	MH222-WWX White w/ Arrow
59411228	MH222E-RRX Red w/ Arrow
59411229	MH222E-BBX Blue w/ Arrow

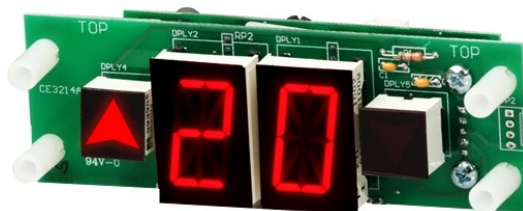
59411322	MH122A-RRX Red w/ Arrow
59411334	MH122A-BBX Blue w/Arrow



59411212	MSV21-RRX Red w/ Arrow
59411328	MSV21-BBX Blue w/ Arrow
59411213	MSV21-WWX White w/ Arrow

59411324	MSV11-RRX Red w/ Arrow
59411329	MSV11-BBX Blue w/ Arrow
5411333	MSV11-WWX White w/ Arrow

59411326	MV105-RWR Red w/ Arrow
----------	------------------------

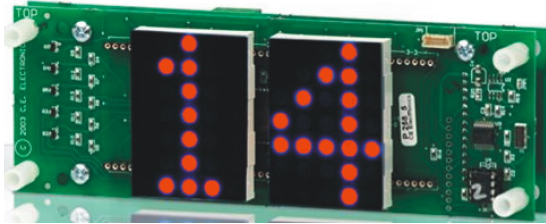


59411225	MH210-RRX Red w/ Arrow
59411230	MH210-BBX Blue w/ Arrow

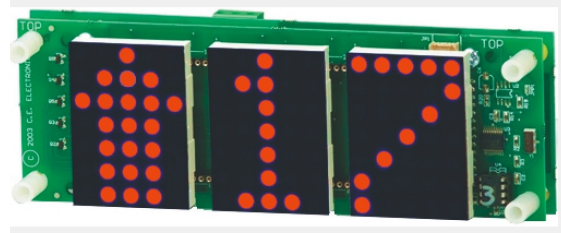
59411325	ME205-RR Red w/ Arrow
----------	-----------------------



DOT MATRIX DPIs



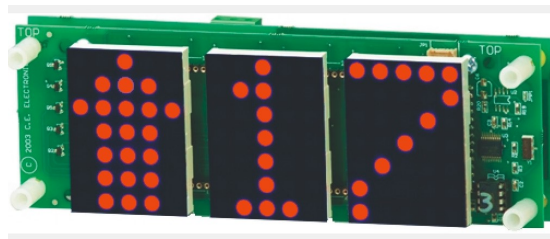
59411220	DH220 - ROC2X, 120 VAC, Red, Binary
59411220B*	DH220, 24-48 VDC+, 48 VAC, Red, Binary



59411320	DH320 - ROC2X, 120 VAC, Red, Binary
59411320B*	DH320, 24-48 VDC+, 48 VAC, Red, Binary



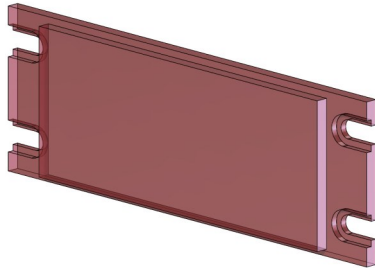
59411327	EV110 - B1B1X, 24-48 VDC+, 48 VAC, Blue, Single Line per Floor, Vertical
59411332 <i>(Not Shown)</i>	EH110 - B1B1X, 24-48 VDC+, 48 VAC, Blue, Single Line per Floor, Horizontal



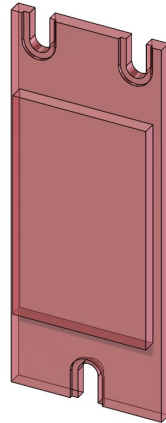
59411321	IH320 - RNC2X, 120 VAC, Red, Binary
59411323	IH320 - RNF2X, Negative 24-48 VDC, Red, Binary
59411321B*	IH320 , 24-48 VDC+, 48 VAC+, Red, Binary



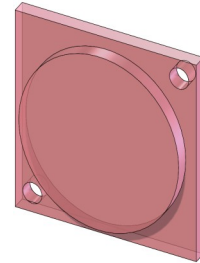
DPI Lens



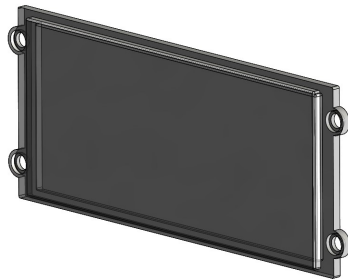
93360020	CE DPI Lens 104-5607 Red, 3.735 x 1.485	MH210
93360032	CE DPI Lens 104-9007 Blue, 3.735 x 1.485	MH210



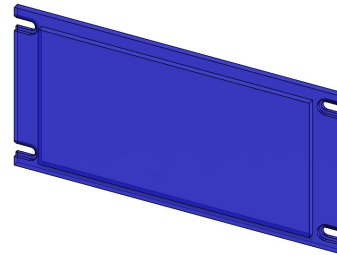
93360019	CE DPI Lens 104-5605 Red, 1.250 x 2.115	MV105
----------	--	-------



93339233	CE DPI Lens 104-0511 Red, 1.500 Dia.	ME205
----------	---	-------



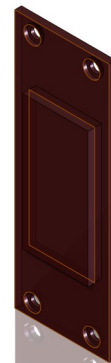
93360013	CE DPI Lens 104-5575 Red, 5.875 x 2.625	DH220, DH320 IH320
93360110	CE DPI Lens 104-6075 Grey, 5.875 x 2.625	DH220, DH320 IH320



93360015	CE DPI Lens 104-5602M Red, 5.875 x 2.625	MH122A MH222
93360018	CE DPI Lens 104-6002M Grey, 5.875 x 2.625	MH122A MH222
93360111	CE DPI Lens 104-9002 Blue, 5.875 x 2.625	MH122A MH222



93360014	CE DPI Lens 104-0505 Red, 2.250 x 2.500	MSV21
93360024	CE DPI Lens 104-9043 Blue, 2.250 x 2.500	MSV21
93360033	CE DPI Lens 104-6043 Grey, 2.250 x 2.500	MSV21



93360017	CE DPI Lens 104-5548 Red, 1.220 x 2.500	MSV11
93360026	CE DPI Lens 104-9048 Blue, 1.220 x 2.500	MSV11
93360031	CE DPI Lens 104-6048 Grey, 1.220 x 2.500	MSV11



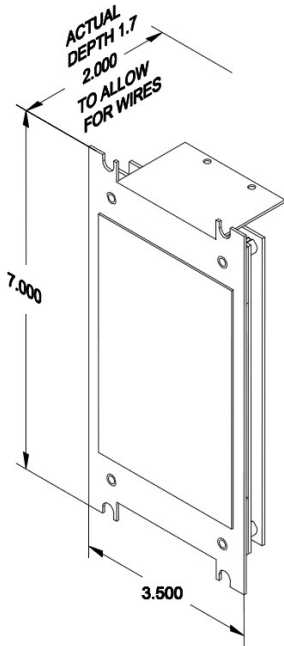
MINI PI

Digital Mini PI
 CE EMN43-B1V (Vertical) Part #59411047
 CE EMN43-B1H (Horizontal) Part #59411049*



- EMN43 - B 1 V

"1" = BASIC
 "2" = SNAP IN STAINLESS
 "V" = VERTICAL
 "H" = HORIZONTAL



EXAMPLE OF DISPLAY



Letter / Number font									
1	2	3	4	5	6	7	8	9	
A	B	C	D	E	F	G	H		

Arrow Style



Arial

OPTIONS:

- WHITE ARIAL FONT CHARACTERS ON BLUE BACKGROUND
- 0-9, A-Z CAPITAL LETTERS ONLY (SEE DETAIL)
- SOLID FILLED ARROW ONLY (SEE DETAIL)
- GREEN AND RED LANTERN AVAILABLE
- ALL OTHER OPTIONS WILL BE CUSTOM ORDERED

SPEAKER PART #63508001



MINI PI

59411048
CE EMN57-BSX
Digital Mini PI



VM3541 ASCII FEMALE SET

ASCII	ASCII	ASCII	ASCII
-3	floor minus 3	36	floor 36
-2	floor minus 2	37	floor 37
-1	floor minus 1	38	floor 38
zero	floor zero	39	floor 39
1	floor 1	40	floor 40
2	floor 2	41	floor 41
3	floor 3	42	floor 42
4	floor 4	43	floor 43
5	floor 5	44	floor 44
6	floor 6	45	floor 45
7	floor 7	46	floor 46
8	floor 8	47	floor 47
9	floor 9	48	floor 48
10	floor 10	49	floor 49
11	floor 11	50	floor 50
12	floor 12	51	floor 51
13	floor 13	52	floor 52
14	floor 14	53	floor 53
15	floor 15	54	floor 54
16	floor 16	55	floor 55
17	floor 17	56	floor 56
18	floor 18	57	floor 57
19	floor 19	58	floor 58
20	floor 20	59	floor 59
21	floor 21	60	floor 60
22	floor 22	1R	floor 1 rear
23	floor 23	2R	floor 2 rear
24	floor 24	3R	floor 3 rear
25	floor 25	4R	floor 4 rear
26	floor 26	5R	floor 5 rear
27	floor 27	6R	floor 6 rear
28	floor 28	B1	basement 1
29	floor 29	B2	basement 2
30	floor 30	B3	basement 3
31	floor 31	B4	basement 4
32	floor 32		
33	floor 33	↑	going up
34	floor 34	↓	going down
35	floor 35		
		A	floor A
		B	basement
		C	concourse
		D	floor D
		E	express
		F	floor F
		G	ground floor
		H	floor H
		I	floor I
		J	floor J
		K	floor K
		L	lobby
		M	mezzanine
		N	floor N
		O	floor O
		P	plaza
		Q	floor Q
		R	roof
		S	street level
		T	terrace
		U	floor U
		V	floor V
		W	floor W
		X	floor X
		Y	floor Y
		Z	floor Z
		G6	garage level 6
		G7	garage level 7
		G8	garage level 8
		G9	garage level 9
		L1	lower level 1
		L2	lower level 2
		LB	lower basement
		LC	lower concourse
		LD	loading dock
		LL	lower level
		LM	lower mezzanine
		LP	lower penthouse
		ML	main lobby
		MZ	mezzanine
		P0	parking level zero
		P1	parking level 1
		P2	parking level 2
		P3	parking level 3
		P4	parking level 4
		P5	parking level 5
		P6	parking level 6
		P7	parking level 7
		P8	parking level 8
		P9	parking level 9
		PA	parking level A
		PB	parking level B
		PC	parking level C
		PH	penthouse
		PL	parking level
		BR	basement rear
		SB	sub basement
		G1	garage level 1
		G2	garage level 2
		G3	garage level 3
		G4	garage level 4
		G5	garage level 5

VM UNIT STANDARD ENG. MESSAGES

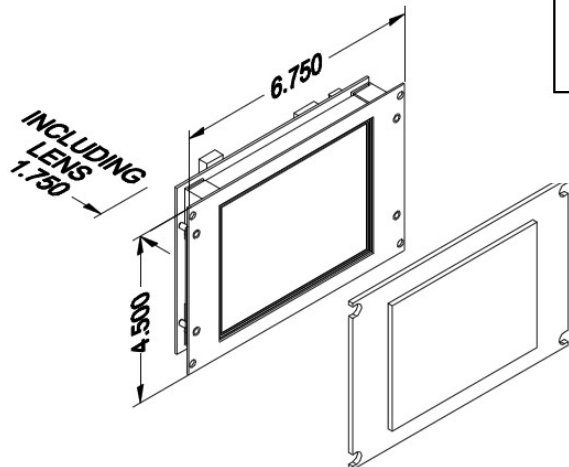
M1 (RM1) This elevator is now in fire return. When the doors open, please exit the building in a safe and orderly manner.
M2 (RM2) This elevator is now in fire return. When the doors open, please exit the building in a safe and orderly manner.
M3 (RM3) Please stand clear of the closing doors.
M4 (RM4) This elevator is on independent service.
M5 (RM5) This car is in overload status. Please remove part of the load to resume service.
M6 (RM6) This elevator is now on emergency power and the car is returning to the main level.
M7 (RM7) This car is now on inspection service.
M8 (RM8) The Seismic Sensor has been activated, please exit the elevator when doors open.
M10 (RM10) Medical emergency! Please exit this elevator. Do not be alarmed. This car is transferring to emergency service and will return to the floor.
M11 (RM11) This elevator is needed because of an emergency. Please exit the elevator when doors open.

EXAMPLE OF DISPLAY

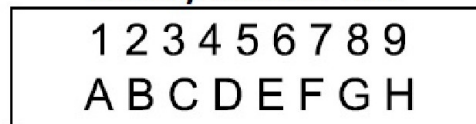


- EMN57 - BSX

- "H" = HORIZONTAL
- "V" = VERTICAL
- "S" = SMALL
- "X" = NO SPEAKER
- "S" = SPEAKER
- "G" = GONG SPEAKER



Letter / Number font



Arrow Style



Arial

OPTIONS:

- WHITE ARIAL FONT CHARACTERS ON BLUE BACKGROUND
- 0-9, A-Z CAPITAL LETTERS ONLY (SEE DETAIL)
- SOLID FILLED ARROW ONLY (SEE DETAIL)
- VOICE ANNUNCIATION OPTIONS LISTED IN ASCII
- ALL OTHER OPTIONS WILL BE CUSTOM ORDERED

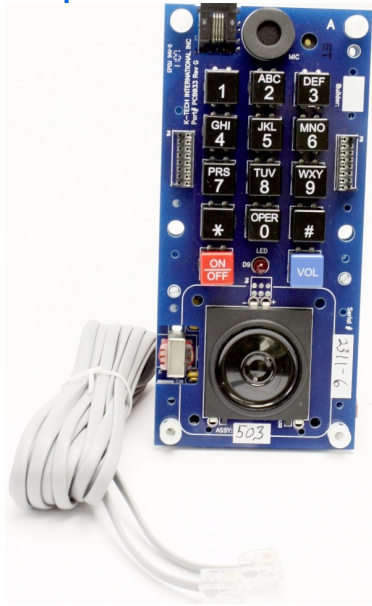
SPEAKER PART #63508000



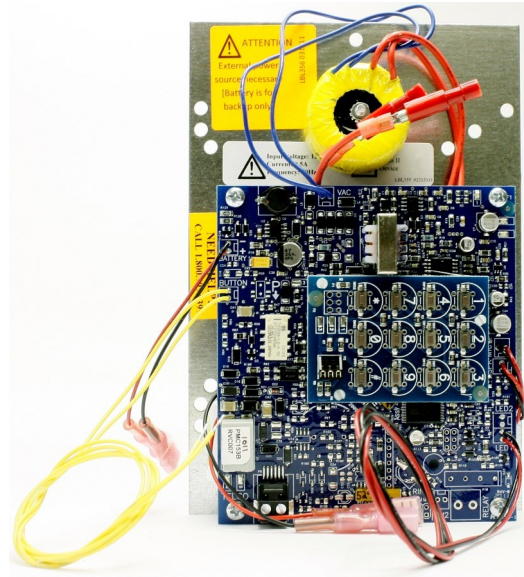
This Page is intentionally left blank.



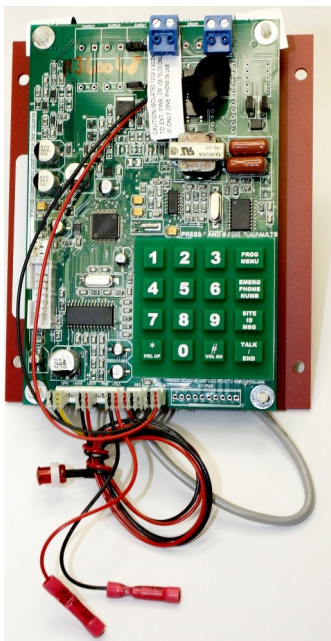
Phones



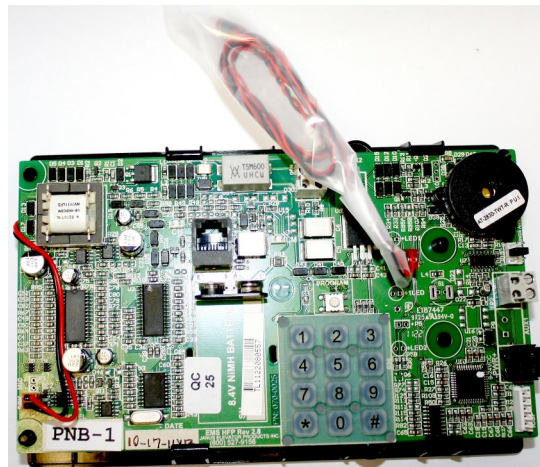
K-Tech Residential	
6110016	Residential ET301-OEM-B



K-Tech	
61100017	ET901A-OEMU-AM-WP Weather Proof
61100022	ET901A-OEMU-AM-3 Building Powered
*61100023	ET-98 Machine Room Verification Board
*61100024	ET98-DB Alarm Board Assembly
61100038	ET901A-OEMV-AM w/ Voice Annun Connection
*61100034	ET92A Master Station



Wurtec	
61100040	11-930-ANN w/ Voice Annun Connection
61100008	11-913 Line Powered
*61100025	11-930-CA Line Verification Board
*61100033	11-598-H1A Master Station

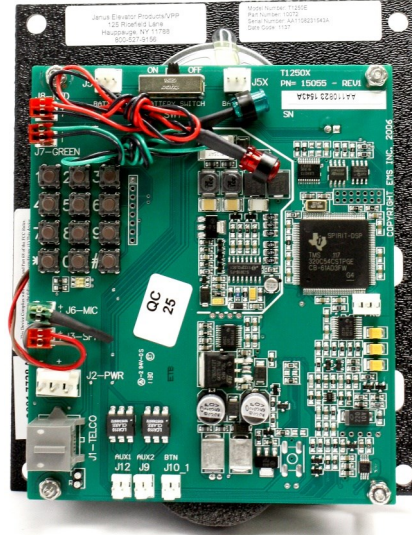
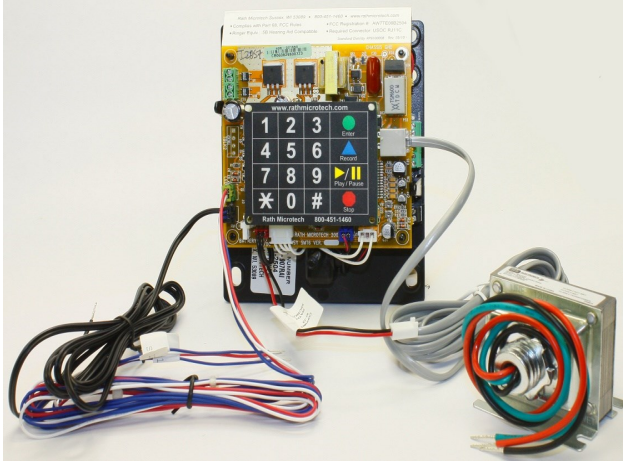


EMS	
61100012	PNB 1-LED
61100031	PNB W/PLM
*61100032	LMA-NC Line Monitoring Board

* NOT SHOWN



Phones



Rath

61100019	2100-907RAI Building Powered
*61100026	RP7900600 Alarm Board
*61100027	RP7900601 Machine Room Junction Board
*61100028	RP7300144-24 Transformer
*61100021	2400-875HE Rath Residential
*61100035	2500-205 Smartrescue 5 Master Station
*RP7700104S	RP7700104S UPS Battery Backup
*2100-SVE	2-Wire Ethernet Extender
*2100-SVCF-IN	SmartView Camera
*2100-SVD-IN	SmartView Display
*2100-SVC	SmartView Controller

Vandal Proof

61100007	T1250E
----------	--------

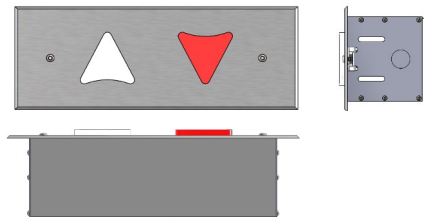
Other Phones and Accessories

*61100029	Kings III	PLV-20 Line Verification Board
*61100020	Talk-a-Phone	RP7900600 Alarm Board
*61100039	Viking	Phone, Viking E-1600-55A

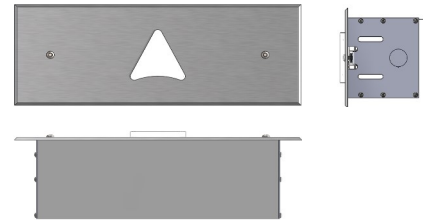
* NOT SHOWN



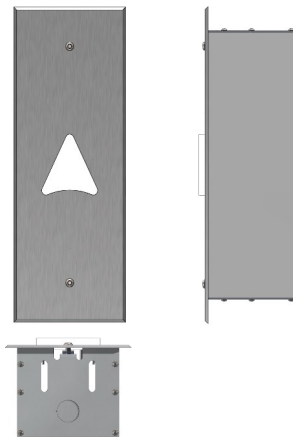
Car & Hall Lanterns



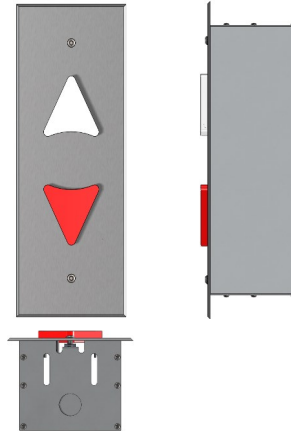
Intermediate Hall direction Lantern
Part # FF0613-001
Red/ White LEDs
#4 Stainless Steel Cover: 13.0" x 5.0"
Box : 11" x 4" x 3.5" Deep
Cutout size: 11.25" W x 4.25" H
(Not Stock, Made to Order)



Terminal Hall direction Lantern
Part # FF0614-001 (Up)
Part # FF0615-001 (Down)
Red/ White LEDs
#4 Stainless Steel Cover: 13.0" x 5.0"
Box : 11" x 4" x 3.5" Deep
Cutout size: 11.25" W x 4.25" H
(Not Stock, Made to Order)



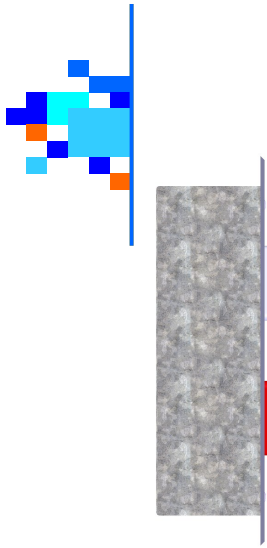
Terminal Hall direction Lantern
Part # FF0617-001 (Up) *
Part # FF0618-001 (Down) *
Red/ White LEDs
#4 Stainless Steel Cover: 5.0" x 13.0"
Box : 4" x 11" x 3.5" Deep
Cutout size: 4.25" W x 11.25" H



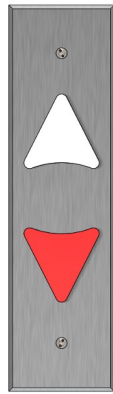
Intermediate Hall direction Lantern
Part # FF0616-001 *
Red/ White LEDs
#4 Stainless Steel Cover: 5.0" x 13.0"
Box : 4" x 11" x 3.5" Deep
Cutout size: 4.25" W x 11.25" H

* INDICATES STOCK

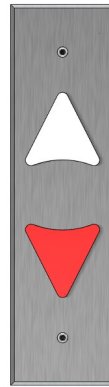
Car & Hall Lanterns



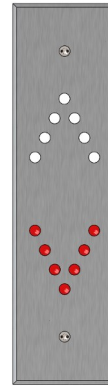
Car Direction Lantern
Red/White LEDs
LED with Chime 24-120 VAC/DC
#4 Stainless Steel Cover: 3.50" x 13.0"
Box : 3" x 11" x 3.5" Deep
Cutout size: 3.25" W x 11.25" H



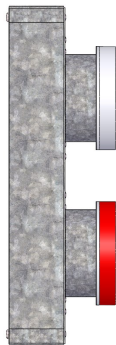
Car Direction Lantern
with
Tamper Proof Screws
Part # FE3113 *



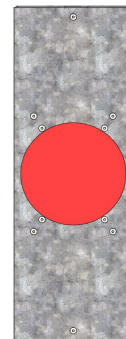
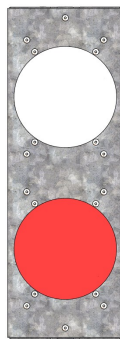
Car Direction Lantern
with
Button Head Screws
Part # FE3114 *



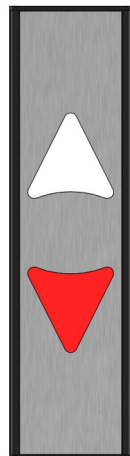
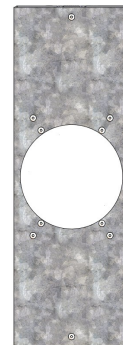
Tamper Proof Car Direction
Lantern with
Tamper Proof Screws
Part # FE3116 *



Intermediate Front Serviceable Hall Lantern,
4" Dia
Red/White LEDs
Part # FF0619 *
LED with Chime 24-120 VAC/DC
Cutout: 3.50" Dia. Center to Center: 6.0"
Box Size: 13"W x 4.5"H x 2.25" D
Can be rotated for Vertical Mount or Horizontal Mount



Front Serviceable Terminal Hall Lantern, 4" Dia
White LED (Up)
Red LED (Down)
Part # FF0620 *
Part # FF0621 *
LED with Chime 24-120 VAC/DC
Cutout: 3.5" Dia
Box: 13"W x 4.5"H x 2.25" D
Can be rotated for Vertical Mount or Horizontal Mount

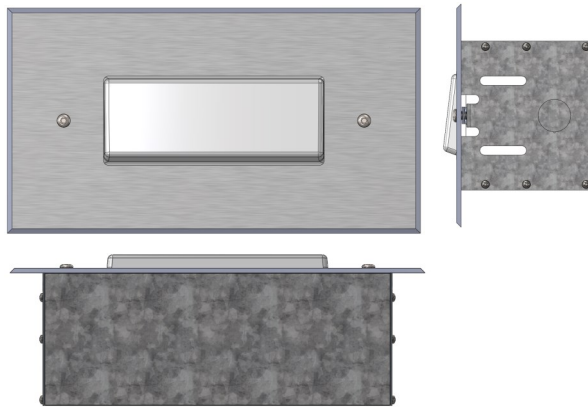


Hinging I-Line Car Lantern
Part # FH1037-001 *
Red/White LEDs
LED, 24-120 VAC/DC Volts
Surface Mount
3.500" x 13.250" x 1.250" Deep
Chime ordered separately
See Page 12

* INDICATES STOCK



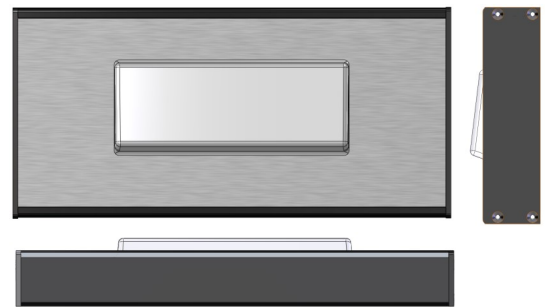
Emergency Light Assembly



Flush Mount
 Cover - 11.00"W X 6.00"H
 Box - 9.25"W X 4.0"H X 3.5"Deep
 Cutout - 9.5"W X 4.25"H

FF6667-XXX

- 11 Ga. Stainless Steel, #4 Brushed -001
- 11 Ga. Stainless Steel, #8 Mirrored -002
- 0.125 Thick 60/40 Muntz, #4 Brushed -003
- 0.125 Thick 60/40 Muntz, #8 Mirrored -004



Surface Mount I-Line
 Stainless or Muntz Faceplate W/Black Sides
 11.0" W X 5.244"H X 1.375" Deep

FF6668-XXX

- 11 Ga. Stainless Steel, #4 Brushed -001
- 11 Ga. Stainless Steel, #8 Mirrored -002
- 0.125 Thick 60/40 Muntz, #4 Brushed -003
- 0.125 Thick 60/40 Muntz, #8 Mirrored -004



Surface Mount Panned Cover
 7.25"W X 3.00"H X 1.25" Deep

FF6670-XXX

- 11 Ga. Stainless Steel, #4 Brushed -001
- 11 Ga. Stainless Steel, #8 Mirrored -002
- 0.125 Thick 60/40 Muntz, #4 Brushed -003
- 0.125 Thick 60/40 Muntz, #8 Mirrored -004

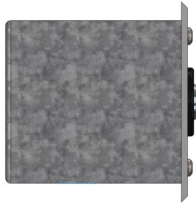
Notes

1. Battery, bracket, 36" long wires to ship loose for remote mounting.
2. 6 volt alarm bell sold separately.
3. Rated input: 120 VAC, 50mA MAX;
 Rated outputs: 6 VDC, 350mA MAX
 For auxiliary lighting unit, 6 VDC,
 500 mA MAX for audible signaling.

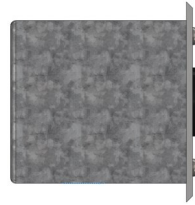
Not Stock



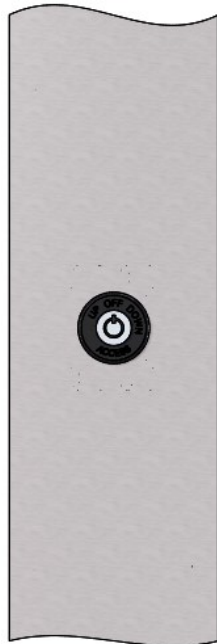
Access Stations



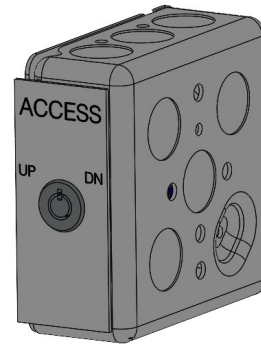
EX514 Hoistway Access Assembly
Part # FF1800-001*
*Round Projecting,
Buttonhead Fasteners,
#4 Stainless Steel, 4 X 4,
Box, 3" W X 3.25" H X 3.5" Deep*



EX514 Hoistway Access Assembly
Part # FF1803-001
*Round Projecting,
Tamperproof Fasteners,
#4 Stainless Steel, 4 X 4,
Box, 3" W X 3.25" H X 3.5" Deep*



EX514 Jamb Mount Access Hall Station
Part # FF1804
*Round Projecting,
Box, 9.25" W X 3.25" H X 3.5" Deep*



EX514 Sight Gaurd Access Station
Part # FF1805-001*
*Tamperproof Device,
#4 Stainless Steel Engraved Plate
2-Gang Box w/ 0.75 knockouts*

* Indicates Stock



Hall Stations



*Hall Station Assembly
Terminal
Up or Down
Round Projecting
Part # FF2000-001**

*Hall Station Assembly
Intermediate
Round Projecting
Part # FF2001-001**



*Hall Station Assembly
Intermediate
with EX515 Fire KOS
Round Projecting
Part # FF2002-001*

*Hall Station Assembly
Terminal
with EX515 Fire KOS
Round Projecting
Part # FF2003-001*

*Hall Station Assembly
Intermediate
with EX515 Fire KOS
Round Projecting
Part # FF2027-001*



*Hall Station Assembly
Intermediate with
FEO-K1 Fire KOS
Round Projecting
Part # FF2005-001*

*Hall Station Assembly
Terminal with
FEO-K1 Fire KOS
Round Projecting
Part # FF2006-001*

*All Hall Stations are 4"W X 11.25"H #4 Stainless Steel,
24-120 VAC/VDC Amber Led Illumination,
Box - 3"W X 9.25"H X 3.5"Deep
Cutout - 3.25"W x 9.5"H*

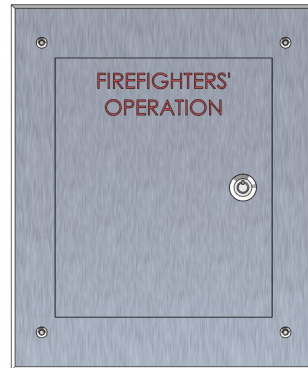
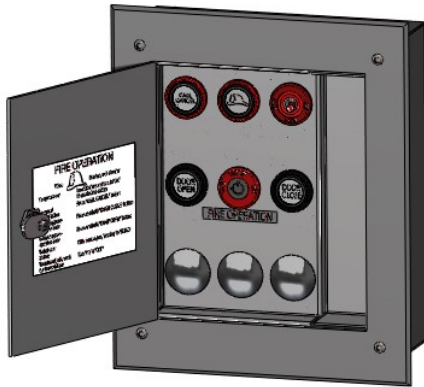
* Indicates Stock



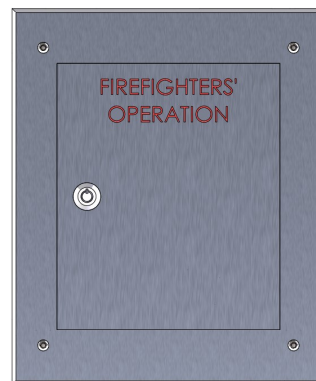
Fire Cabinets



XXX	Finish
001	#4 Stainless Steel
002	#8 Stainless Steel
003	#4 Muntz
004	#8 Muntz
005	#4 Bronze
006	#8 Bronze



FE3404 - XXX
 2004 Left Hinge, Key EX515
 10"W X 12"H Cover
 7.125"W X 8.5"H Door
 9"W X 10.5"H X 3.5" Deep Box
 9.250"W X 10.75"H Cutout



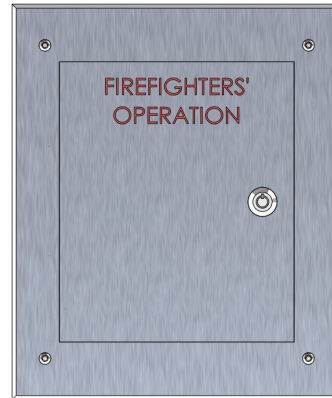
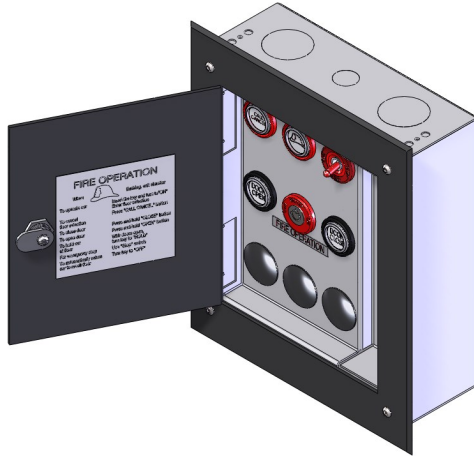
FE3405 - XXX
 2004 Right Hinge, Key EX515
 10"W x 12"H Cover
 7.125"W X 8.5"H Door
 9"W x 10.5"H X 3.5" Deep Box
 9.250"W X 10.75"H Cutout



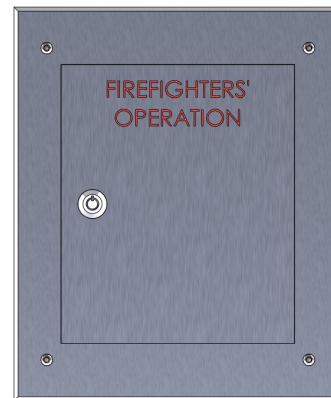
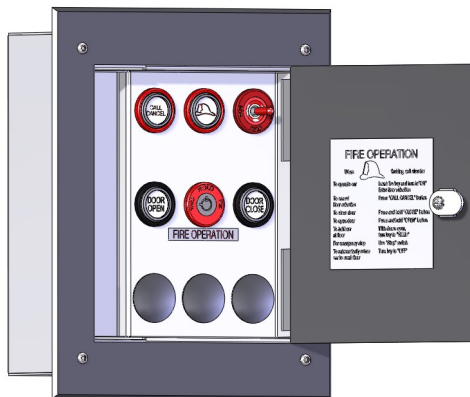
Fire Cabinets



XXX	Finish
001	#4 Stainless Steel
002	#8 Stainless Steel
003	#4 Muntz
004	#8 Muntz
005	#4 Bronze
006	#8 Bronze



FE6670 - XXX
 2005 Left Hinge, Key EX515
 10"W X 12"H Cover
 7.125"W X 8.5"H Door
 9"W X 10.5"H X 3.5" Deep Box
 9.250"W X 10.75"H Cutout



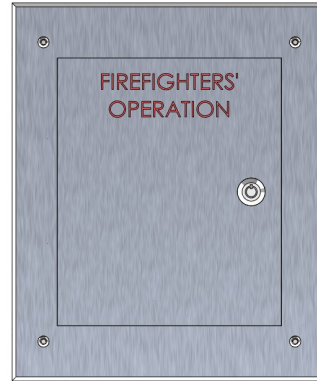
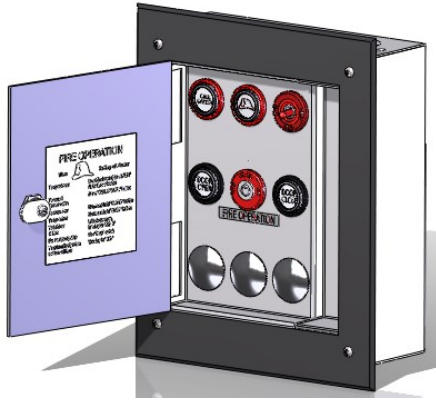
FE6671 - XXX
 2005 Right Hinge, Key EX515
 10"W x 12"H Cover
 7.125"W X 8.5"H Door
 9"W x 10.5"H X 3.5" Deep Box
 9.250"W X 10.75"H Cutout



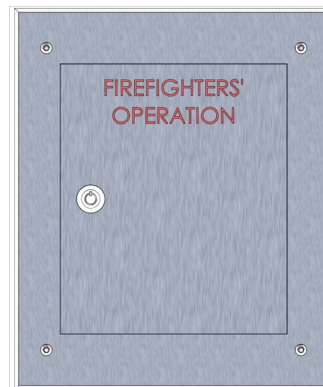
Fire Cabinets



XXX	Finish
001	#4 Stainless Steel
002	#8 Stainless Steel
003	#4 Muntz
004	#8 Muntz
005	#4 Bronze
006	#8 Bronze



FE3406- XXX
 2007 Left Hinge, Key FEO-K1
 10"W X 12"H Cover
 7.125"W X 8.5"H Door
 9"W X 10.5"H X 3.5" Deep Box
 9.250"W X 10.75"H Cutout



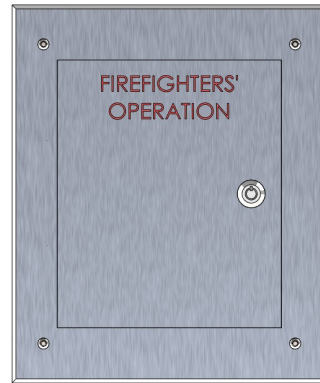
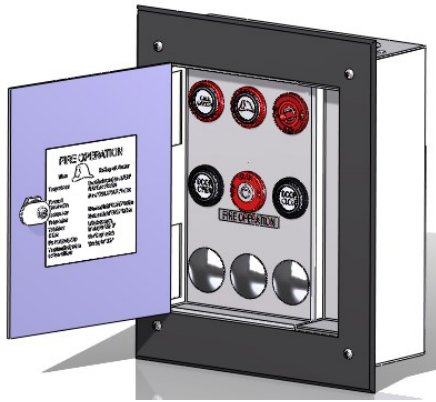
FE3407 - XXX
 2007 Right Hinge, Key FEO-K1
 10"W x 12"H Cover
 7.125"W X 8.5"H Door
 9"W x 10.5"H X 3.5" Deep Box
 9.250"W X 10.75"H Cutout



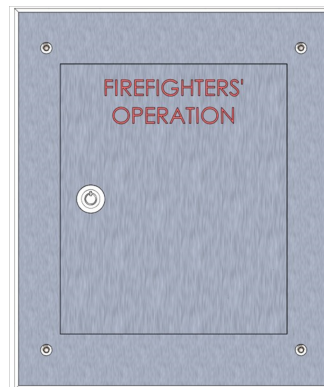
Fire Cabinets



XXX	Finish
001	#4 Stainless Steel
002	#8 Stainless Steel
003	#4 Muntz
004	#8 Muntz



FE3409- XXX
 2010 Left Hinge, Key FEO-K1
 10"W X 12"H Cover
 7.125"W X 8.5"H Door
 9"W X 10.5"H X 3.5" Deep Box
 9.250"W X 10.75"H Cutout



FE3408 - XXX
 2010 Right Hinge, Key FEO-K1
 10"W x 12"H Cover
 7.125"W X 8.5"H Door
 9"W x 10.5"H X 3.5" Deep Box
 9.250"W X 10.75"H Cutout